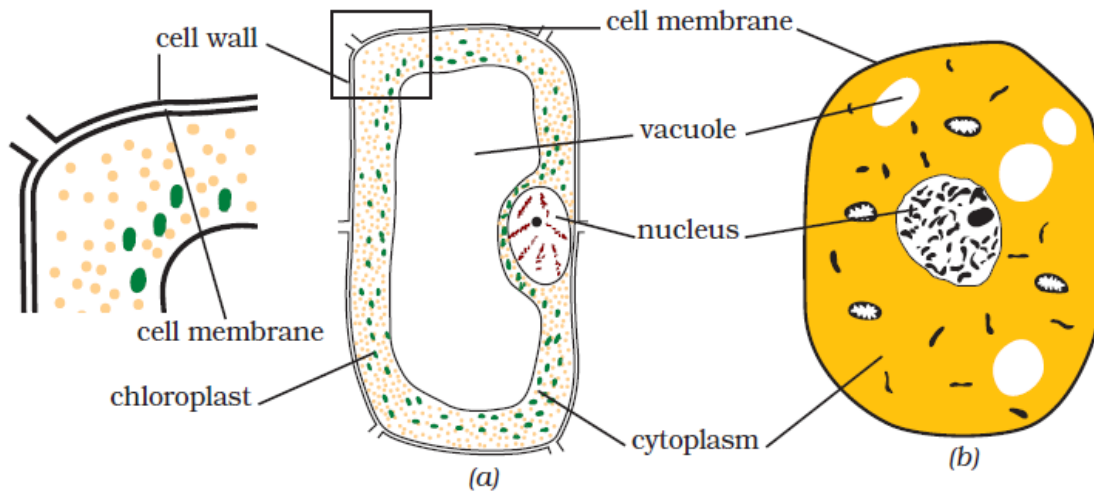


Cell Structure and Functions

Q1. Make sketches of animal and plant cells. State three differences between them.

Ans. Figure 'a' – Plant Cell

Figure 'b' – Animal Cell



Animal Cell	Plant Cell
1. They are generally small in size.	1. They are usually larger than animal cells.
2. Cell wall is absent.	2. Cell wall is present.
3. Vacuoles are smaller in size.	3. Vacuoles are larger in size.