

Name: _____ Date: _____

Cell Structure and Functions

Q1. Make a sketch of the human nerve cell. What function do nerve cells perform?

Ans. _____

Q2. Write short notes on the following:

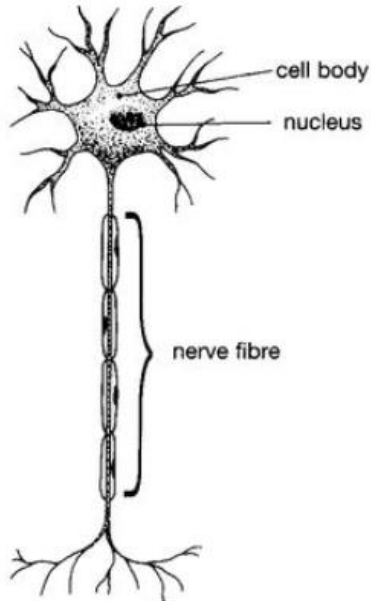
- (a) Cytoplasm
- (b) Nucleus of a cell

Ans. _____

Cell Structure and Functions

Q1. Make a sketch of the human nerve cell. What function do nerve cells perform?

Ans.



The nerve cell receives and transfers messages, thereby helping to control and coordinate the working of different parts of the body.

Q2. Write short notes on the following:

- (a) Cytoplasm
- (b) Nucleus of a cell

Ans. Cytoplasm - It is the jelly-like substance present between the cell membrane and the nucleus. Various other components, or organelles, of cells are present in the cytoplasm. These are mitochondria, golgi bodies, ribosomes, etc.

Nucleus of a cell - It is generally spherical and located in the centre of the cell. It is composed of the following components:

- a. Nuclear membrane - Nucleus is separated from the cytoplasm by a membrane called the nuclear membrane. This membrane is also porous and allows the movement of materials between the cytoplasm and the inside of the nucleus.
- b. Nucleolus - A smaller spherical body in the nucleus is called the nucleolus.
- c. Chromosomes - nucleus contains thread-like structures called chromosomes. These carry genes and help in inheritance or transfer of characters from the parents to the offspring. The chromosomes can be seen only when the cell divides.