

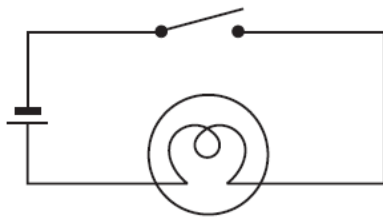
Name: _____ Date: _____

Electric Current and its Effects

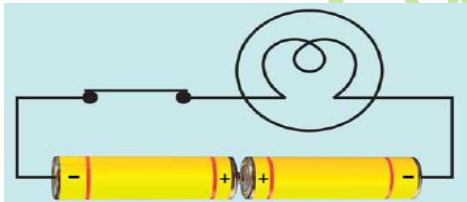
Q1. Draw the circuit diagram to represent the circuit shown below.



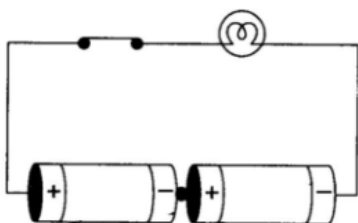
Ans. _____



Q2. The bulb in the circuit shown in Fig. does not glow. Can you identify the problem? Make necessary changes in the circuit to make the bulb glow.

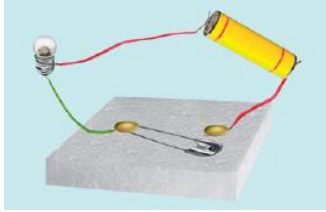


Ans. _____

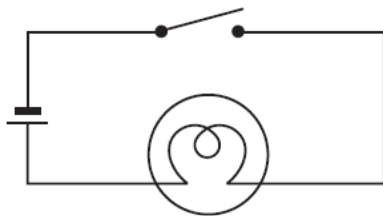


Electric Current and its Effects

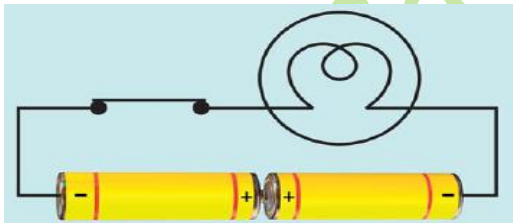
Q1. Draw the circuit diagram to represent the circuit shown below.



Ans. Here, the switch is in the 'OFF' position as one of the board pin is not attached to the safety pin. Thus, the circuit is incomplete. It is said to be open and no current flows through any part of the circuit. Bulb glows only when the switch is in the 'ON' position and the electric circuit is closed.



Q2. The bulb in the circuit shown in Fig. does not glow. Can you identify the problem? Make necessary changes in the circuit to make the bulb glow.



Ans. The bulb in the circuit is not glowing because the two cells are not connected properly. In order to make the bulb glow, the negative terminal of one cell should be connected to positive terminal of the other cell.

