

Name: _____ Date: _____

Transportation in Animals and Plants

Q1. Write a note on excretory system in humans.

Ans. _____

Q2. Draw a labeled diagram of the human heart.

Ans.

www.educationwithfun.com

Transportation in Animals and Plants

Q1. Write a note on excretory system in humans.

Ans. A mechanism to filter the blood is required. This is done by the blood capillaries in the kidneys. When the blood reaches the two kidneys, it contains both useful and harmful substances. The useful substances are absorbed back into the blood. The wastes dissolved in water are removed as urine. From the kidneys, the urine goes into the urinary bladder through tube-like ureters. It is stored in the bladder and is passed out through the urinary opening at the end of a muscular tube called urethra. The kidneys, ureters, bladder and urethra form the excretory system.

Q2. Draw a labeled diagram of the human heart.

Ans.

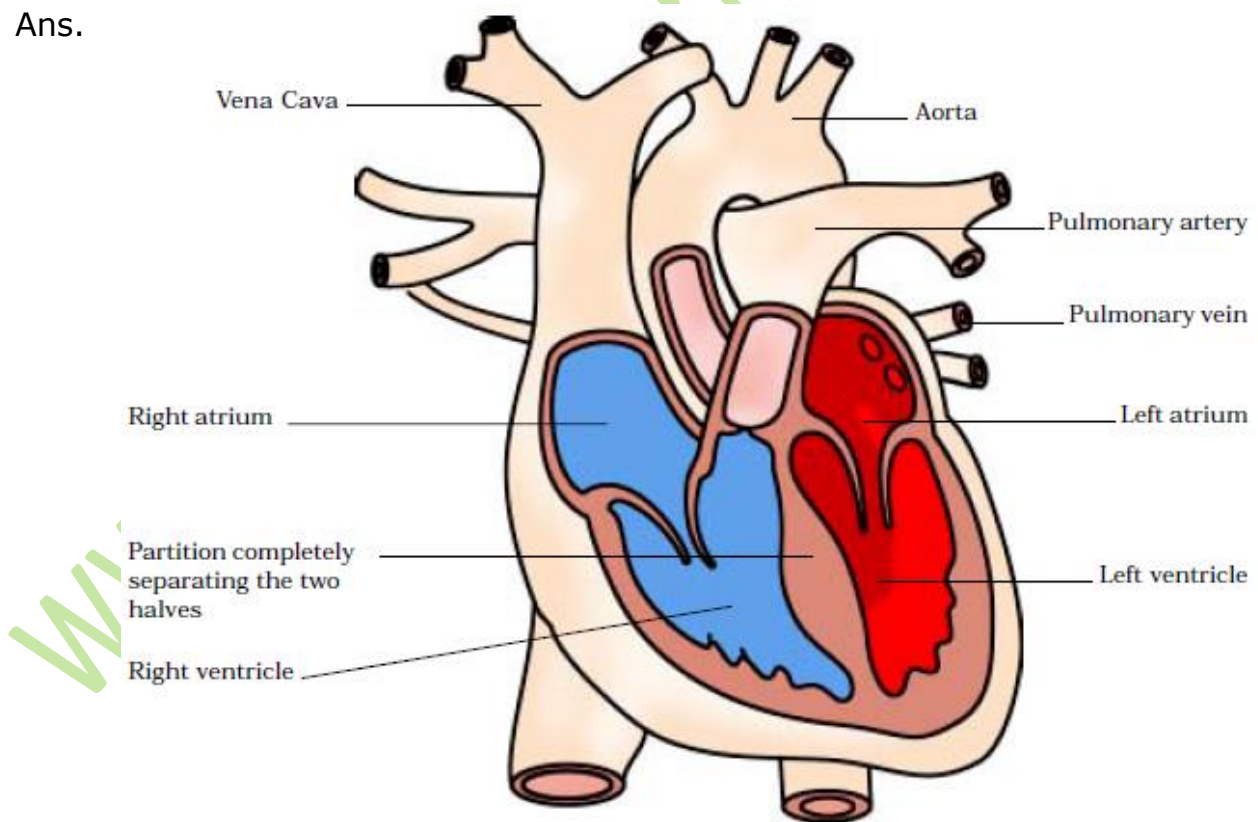


Image From NCERT