

Transportation in Animals and Plants

Q1. Describe the function of the heart.

Ans. The heart is a hollow muscle in the middle of the chest that pumps blood around the body, supplying cells with oxygen and nutrients. A muscular wall, called the septum, divides the heart lengthways into left and right sides. A valve divides each side into chambers: upper atrium and a lower ventricle. When the heart muscle contracts, it squeezes blood through the atria and then through the ventricles. Oxygenated blood from the lungs flows from the pulmonary veins into the left atrium, through the left ventricle, and then out via the aorta to all parts of the body. Deoxygenated blood returning from the body flows from the vena cava into the right atrium, through the right ventricle, and then out via the pulmonary artery to the lungs for reoxygenation.

Q2. Draw a diagram of the human excretory system and label the various parts.

Ans.

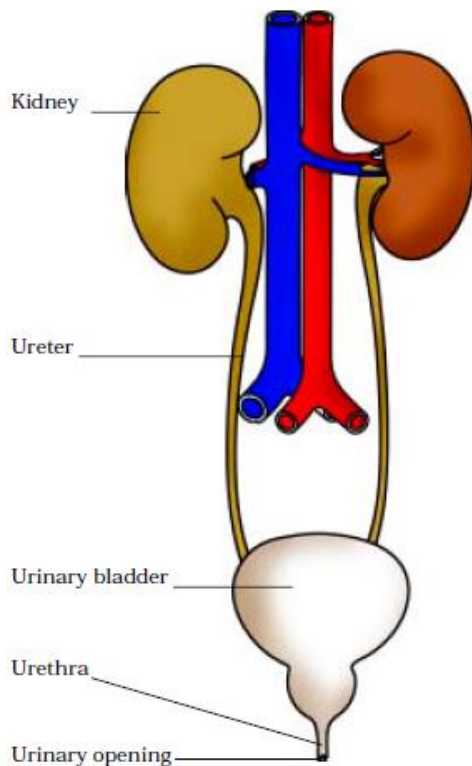


Image from NCERT